



Since 1966



# SK VALVES

## GROUP

## 綜合型錄

叶光閥業股份有限公司 SHYE KUANG VALVES MFG CO.,LTD.  
恩盈企業股份有限公司 EN IN ENTERPRISE CO.,LTD.

■ 總公司 Headquarter

923屏東縣萬巒鄉佳興路83號 No. 83, Chia-Hsing Rd., Wan-Luan, Pingtung 923, Taiwan R.O.C.  
TEL : +886-8-783-3834 FAX : +886-8-783-3734 Skype: skvalve.andrew  
E-mail: international@skvalves.com.tw

■ 北區辦公室 North Taiwan Office

241新北市三重區環河北路三段270號1樓  
No. 270, Sec. 3, Huanhe N. Rd., Sanchong Dist., New Taipei City 241076, Taiwan R.O.C.  
TEL : +886-2-2988-4657 FAX : +886-2-2988-4657



[www.skvalves.com.tw](http://www.skvalves.com.tw)

■ 本公司對型錄所列之材質與尺寸保留認為必要時作修改之權利，或依客戶需求設計，實際尺寸及材質仍以客戶訂購時所提供之圖說為準。

SK Valves reserves the right to modify the materials or/and dimensions of the products as provided hereunder from time to time if necessary, or in accordance with the request of clients. The actual dimensions or/and material used are subject to the customer's request after placing the order.



## PROFILE

### 公司簡介

Established in Kaohsiung, Taiwan in 1966, SK Valves' primary product was casting at the early stage, and has started to produce gate valves, hydrants, and fittings since 1974 for domestic clients, mainly for Taiwan Water Co. In 1991 SK Valve expended new plant of 20,000 square meter in Pingtung, Taiwan to not only increase the production capacity but also to have the ability to devote into innovation and improvement of our products to satisfy various requirements from our clients. In 1998, SK Valves acquired the certificate of ISO 9000, with which we are capable of marketing our products compliant with international standard to clients in Europe, America, Middle East, and Asia. Now SK Valves not only has numerous series of products but also introduces advanced technique from overseas and incorporates it into our products. In addition, we are also the agency of products in relation to pipeline system. By our R&D team and integrated sources we can provide clients the "best solution" as to any pipeline systems problem with technical support in the best quality, efficiency, and service.



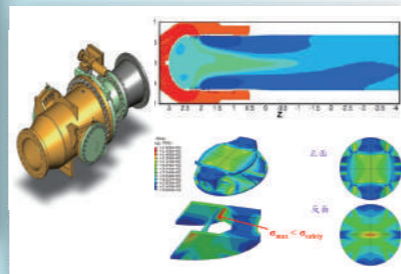
SK VALVES於1966年成立於高雄，初期以生產鑄鐵件為主；1974年開始生產閘閥、消防栓、水管零件，供應台灣自來水公司；1991年於屏東成立第二廠，佔地20000餘平方公尺，除了生產能量的提升外，更致力於產品的研發及改良，以符合國內外顧客多方的要求；1998年取得ISO 9000品質系統認證，以符合國際要求的品質水準，將產品行銷於歐、美、中東、東南亞等國家。

現金SK VALVES除了擁有廣大的產品群外，更從國外引進先進的技術，並代理管線系統相關的產品，期望以強大的研發團隊整合各項資源，提供管線系統「更好的解決方案」，因此您不只可在SK VALVES獲得品質、效率及服務的保證，更可以獲得相關技術的支援。

**R&D team / R&D 研發團隊**

Our R&D team has the strong capability and profession to constantly improve the products as well as to search and integrate new technologies into the products to provide our clients the "best solutions".

堅強的R&D團隊持續地對產品作改良，並尋找整合各種技術，提供顧客管線系統的「最佳的解決方案」。



**Casting / 鑄造**

With high frequency induction furnace coordinated with CE meter detection method, SK Valves can provide castings with good and sustainable quality.

高週波熔煉爐及日本CE檢測技術提供顧客品質穩定的鑄件。



**Material Inspection / 材質檢驗**

By casting tensile strength test, hardness test and metallurgical microscope examination to ensure that the quality of casting and parts are in line with the requirements of our clients.

抗拉強度試驗機、硬度試驗機、金相檢測設備確保鑄件及零件材料符合顧客要求。



**Machining / 加工**

We have various type of machine, CNC precision lathes and specialization machine to satisfy any kind of machining demand.

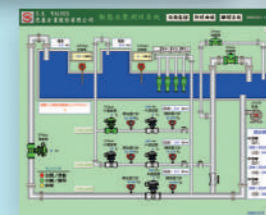
各型加工機具、專用加工機、CNC車床能滿足供各種產品及規格之加工需求。



**Testing / 功能測試**

With liquid/ gas fluid static & dynamic state simulation, we can mimic the product's functional statistics under actual operational circumstances, with which as reference the R&D team may modify the product or develop new ones.

液體及氣體的靜態或動態流體模擬試驗場除能讓產品作一系列的功能測試外，更能模擬與實際使用狀況相似的環境，讓R&D團隊做產品研發及改良的參考。



**Assembling / 組裝**

With series and standardized process to ensure the function of products being fully compliant with our customer's request.

一貫化及標準化的作業流程確保產品功能完全符合客戶要求。



**Coating / 塗裝**

Coating with the facility using fusion bonded epoxy resin powder gives the product a prominent capability of anti-corrosion. This facility also fulfills the safety requirement imposed by the government as to drinking water.

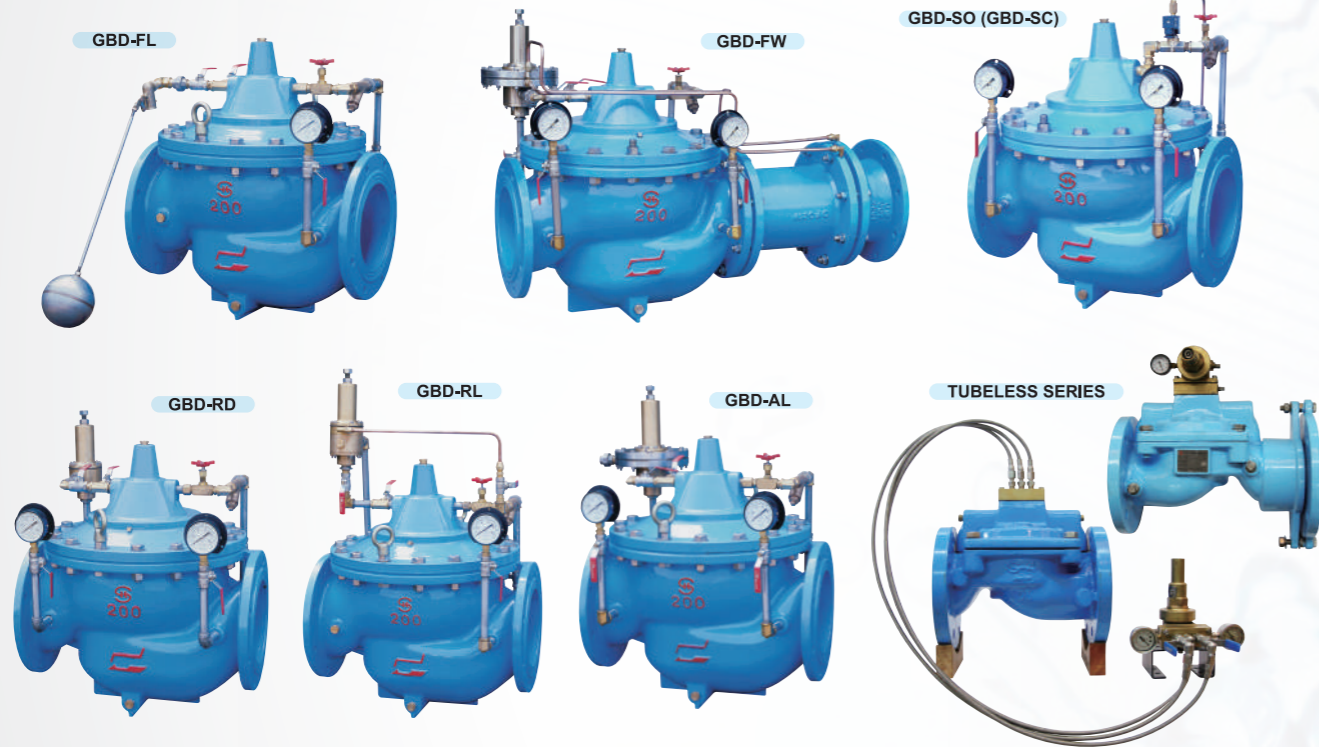
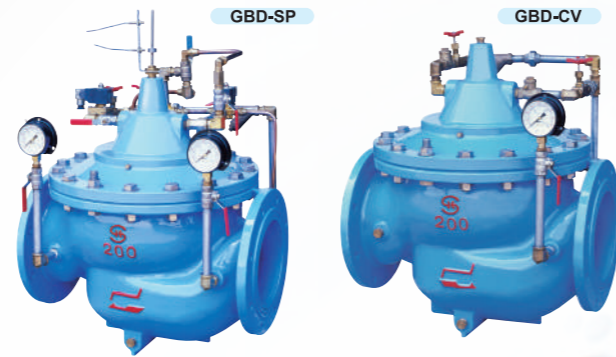
環氧樹脂粉體塗裝設備，採靜電附著原理，除提供產品最佳的防蝕能力外，並符合飲用水的安全要求。



DIAPHRAGM TYPE HYDRAULICAL CONTROL VALVE SERIES 隔膜型水力控制閥系列

- GBD-RL PRESSURE SUSTAINING VALVES / PRESSURE RELIEF VALVES 持(洩)壓閥
- GBD-RD PRESSURE REDUCING VALVES 減壓閥
- GBD-FL/AL FLOAT VALVES / ALTITUDE CONTROL VALVES 遙控浮球 / 液位(高度)控制閥
- GBD-FW RATE OF FLOW CONTROL VALVES 流量控制閥
- GBD-SP PUMP CONTROL VALVES 泵浦控制閥
- GBD-SO(SC) SOLENOID OPERATED VALVES 電磁控制閥
- GBD-CV NON- SLAM CHECK VALVES 靜音逆止閥

Pressure Rating 壓力等級	Nominal Size 標稱口徑
7.5K/10K/16K 125LB/150LB/250LB/300LB PN10/PN16/PN25	40mm ~ 600mm 1 1/2" ~ 24"



PISTON TYPE HYDRAULICAL CONTROL VALVE SERIES 汽缸型水力控制閥系列

- GBP-RL PRESSURE SUSTAINING VALVES / PRESSURE RELIEF VALVES 持(洩)壓閥
- GBP-RD PRESSURE REDUCING VALVES 減壓閥
- GBP-FL/AL FLOAT VALVES / ALTITUDE CONTROL VALVES 遙控浮球 / 液位(高度)控制閥
- GBP-FW RATE OF FLOW CONTROL VALVES 流量控制閥
- GBP-SP PUMP CONTROL VALVES 泵浦控制閥
- GBP-SO(SC) SOLENOID OPERATED VALVES 電磁控制閥
- GBP-CV NON- SLAM CHECK VALVES 靜音逆止閥

Pressure Rating 壓力等級	Nominal Size 標稱口徑
7.5K/10K/16K 125LB/150LB/250LB/300LB PN10/PN16	350mm ~ 1000mm 14" ~ 40"



SLEEVE TYPE CONTROL VALVE SERIES 套筒型控制閥系列

- SSH-RL PRESSURE SUSTAINING VALVES / PRESSURE RELIEF VALVES 固定錐型持(洩)壓閥
- SSH-RD PRESSURE REDUCING VALVES 固定錐型減壓閥
- SSH-FW RATE OF FLOW CONTROL VALVES 固定錐型流量控制閥
- SME-RD MULTIJET REDUCING VALVES 多噴孔型減壓閥
- SME-FW MULTIJET RATE OF FLOW CONTROL VALVES 多噴孔型流量控制閥

Pressure Rating 壓力等級	Nominal Size 標稱口徑	Drive System 驅動系統
7.5K/10K/16K 125LB/150LB/250LB/300LB PN10/PN16	150mm ~ 2600mm 6" ~ 104"	Hydraulic 液力(水壓或油壓) Pneumatic 氣壓 Electric Actuator 電動驅動機



METAL SEATED BALL TYPE AUTOMATIC CONTROL VALVE SERIES 金屬閥座球塞控制閥系列

- BVE-A ALTITUDE CONTROL VALVES 液位控制閥
- BVE-P PUMP CONTROL VALVES 泵浦控制閥
- BVA PNEUMATIC BALL VALVES 氣動球塞閥
- BVH HYDRAULIC BALL VALVES 液控球塞閥
- BVE ELECTRIC ACTUATOR BALL VALVES 電動球塞閥
- BVG HIGH PRESSURE BALL VALVES 高壓球塞閥

Pressure Rating 壓力等級	Nominal Size 標稱口徑	Drive System 驅動系統
7.5K ~ 63K 125LB ~ 900LB PN10 ~ PN160	150mm ~ 2600mm 6" ~ 104"	Hydraulic 液力(水壓或油壓) Pneumatic 氣壓 Electric Actuator 電動驅動機



CHECK VALVE SERIES 逆止閥系列

BUTTERFLY TYPE CHECK VALVES WITH OIL CUSHIONED 油壓緩衝蝶式逆止閥

Pressure Rating 壓力等級	Nominal Size 標稱口徑
7.5K/10K/16K 125LB/150LB/250LB/300LB PN10/PN16	600mm ~ 2000mm 24" ~ 80"



SWING TYPE CHECK VALVES (WITH OIL / AIR CUSHIONED) (油壓 / 空氣緩衝) 擺動式逆止閥

Pressure Rating 壓力等級	Nominal Size 標稱口徑
7.5K~63K 125LB~2500LB PN10~PN420	50mm ~ 900mm 2" ~ 36"



SLANT TYPE CHECK VALVES WITH OIL / AIR CUSHIONED 油壓 / 空氣緩衝斜盤式逆止閥

Pressure Rating 壓力等級	Nominal Size 標稱口徑
7.5K/10K/16K 125LB/150LB/250LB/300LB PN10/PN16	50mm ~ 2000mm 2" ~ 80"



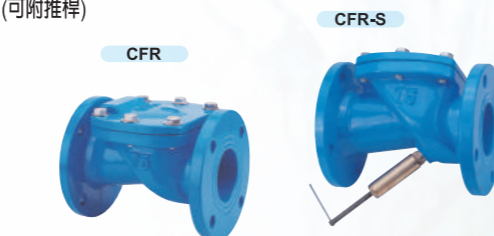
RUBBER FLAPPER SWING CHECK VALVES WITH OIL / AIR CUSHIONED 油壓 / 空氣緩衝橡膠瓣逆止閥

Pressure Rating 壓力等級	Nominal Size 標稱口徑
7.5K/10K/16K 125LB/150LB/250LB/300LB PN10/PN16	75mm ~ 1200mm 3" ~ 48"



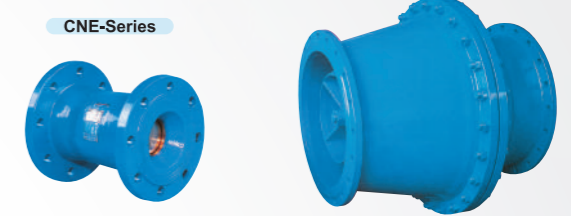
RUBBER FLAPPER SWING CHECK VALVES (WITH PUSH STICK AVAILABILITY) 橡膠瓣逆止閥 (可附推桿)

Pressure Rating 壓力等級	Nominal Size 標稱口徑
7.5K/10K/16K 125LB/150LB/250LB/300LB PN10/PN16	50mm ~ 1200mm 2" ~ 48"



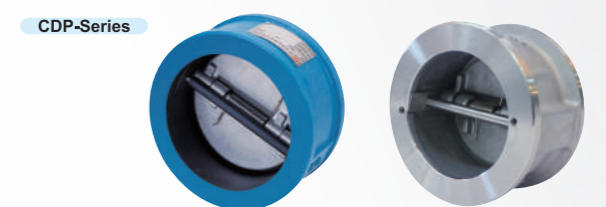
NOZZLE TYPE CHECK VALVES 環狀噴流式逆止閥

Pressure Rating 壓力等級	Nominal Size 標稱口徑
7.5K/10K/16K 125LB/150LB/250LB/300LB PN10/PN16	50mm ~ 1200mm 2" ~ 48"



DUAL PLATE TYPE CHECK VALVES 雙瓣逆止閥

Pressure Rating 壓力等級	Nominal Size 標稱口徑
7.5K~63K 125LB/150LB~2500LB PN10~PN420	40mm ~ 1500mm 1 1/2" ~ 60"



AIR RELEASE / VACUUM VALVE SERIES 排/吸氣閥系列

COMBINATION AIR VALVES 複合式排氣閥

Pressure Rating 壓力等級	Nominal Size 標稱口徑
7.5K/10K/16K 125LB/150LB/250LB/300LB PN10/PN16/PN25	20mm ~ 400mm 3/4" ~ 16"



QUICK AIR VALVES 急速式排氣閥

Pressure Rating 壓力等級	Nominal Size 標稱口徑
7.5K/10K/16K 125LB/150LB/250LB/300LB PN10/PN16/PN25	20mm ~ 400mm 3/4" ~ 16"



AUTOMATIC AIR RELEASE VALVES 自動排氣閥

Pressure Rating 壓力等級	Nominal Size 標稱口徑
7.5K/10K/16K 125LB/150LB/250LB/300LB PN10/PN16/PN25	20mm ~ 50mm 3/4" ~ 2"



SEWAGE AIR RELEASE VALVES 污水排氣閥

Pressure Rating 壓力等級	Nominal Size 標稱口徑
7.5K/10K/16K 125LB/150LB/250LB/300LB PN10/PN16	20mm ~ 200mm 3/4" ~ 8"



HYDRAULIC CONTROL VALVES 油壓關斷閥系列

Pressure Rating 壓力等級	Nominal Size 標稱口徑
7.5K/10K/16K 125LB/150LB/250LB/300LB PN10/PN16	300mm ~ 3600mm 12" ~ 144"

BBF-EE  
BBF-ME



緊急遮斷閥  
PIPE BURST VALVE

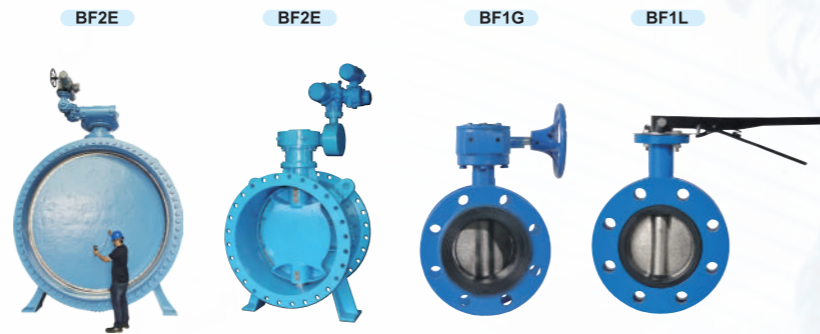


複葉閥  
BIPLANE TYPE VALVE

FLANG TYPE BUTTERFLY VALVES 法蘭式蝶閥系列

Pressure Rating 壓力等級	Nominal Size 標稱口徑
7.5K/10K/16K 125LB/150LB/250LB/300LB PN10/PN16	150mm ~ 3200mm 6" ~ 128"

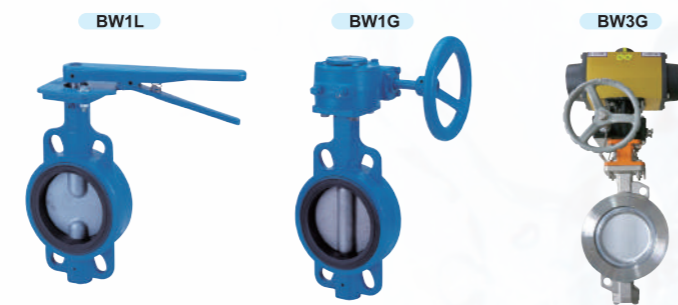
Construction Style	結構型式
Centric	中軸型
Eccentric	雙偏心型
Triple Offset	三偏心型



WAFER TYPE BUTTERFLY VALVES 夾持式蝶閥系列

Pressure Rating 壓力等級	Nominal Size 標稱口徑
7.5K/10K/16K 125LB/150LB/250LB/300LB PN10/PN16/PN25	40mm ~ 1200mm 1 1/2" ~ 48"

Construction Style	結構型式
Centric	中軸型
Eccentric	雙偏心型
Triple Offset	三偏心型



LUG TYPE BUTTERFLY VALVES 多耳式蝶閥系列

Pressure Rating 壓力等級	Nominal Size 標稱口徑
7.5K/10K/16K 125LB/150LB/250LB/300LB PN10/PN16/PN25	40mm ~ 1200mm 1 1/2" ~ 48"

Construction Style	結構型式
Centric	中軸型
Eccentric	雙偏心型
Triple Offset	三偏心型



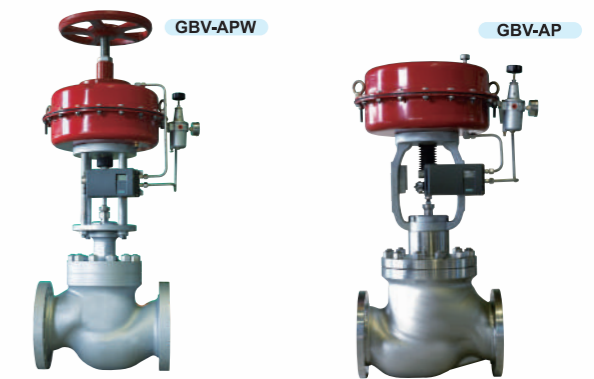
GATE VALVES 閘閥系列

Pressure Rating 壓力等級	Nominal Size 標稱口徑
7.5K~63K 125LB~2500LB PN10~PN420	50mm ~ 1200mm 2" ~ 48"



GLOBE VALVES 球型閥系列

Pressure Rating 壓力等級	Nominal Size 標稱口徑
7.5K~63K 125LB~2500LB PN10~PN420	40mm ~ 400mm 1 1/2" ~ 16"



ECCENTRIC PLUG VALVES 偏心柱塞閥系列

Pressure Rating 壓力等級	Nominal Size 標稱口徑
7.5K/10K/16K 125LB/150LB/250LB/300LB PN10/PN16	50mm ~ 1200mm 2" ~ 48"



FLEXIBLE PIPING 可撓管系列

STEEL FLEXIBLE PIPING 鋼型可撓管  
SPHERICAL FLEXIBLE PIPING 球型可撓管

Pressure Rating 壓力等級	Nominal Size 標稱口徑
7.5K/10K/16K 125LB/150LB/250LB/300LB PN10/PN16/PN25	80mm ~ 3200mm 3" ~ 128"

