



Since 1966

SK VALVES

STAINLESS STEEL VALVES

不銹鋼閥



■ ON/OFF valve series
開關閥系列

■ Check valve series
逆止閥系列

■ Air valve series
排氣閥系列

叶光閥業股份有限公司 SHYE KUANG VALVES MFG CO.,LTD.
恩盈企業股份有限公司 EN IN ENTERPRISE CO.,LTD.

■ 總公司 Headquarter

923屏東縣萬巒鄉佳興路83號 No. 83, Chia-Hsing Rd., Wan-Luan, Pingtung 923, Taiwan R.O.C.
TEL : +886-8-783-3834 FAX : +886-8-783-3734 Skype: skvalve.andrew
E-mail: international@skvalves.com.tw

■ 北區辦公室 North Taiwan Office

241新北市三重區環河北路三段270號1樓
No. 270, Sec. 3, Huanhe N. Rd., Sanchong Dist., New Taipei City 241076, Taiwan R.O.C.
TEL : +886-2-2988-4657 FAX : +886-2-2988-4657



www.skvalves.com.tw

■ 本公司對型錄所列之材質與尺寸保留認為必要時作修改之權利，或依客戶需求設計，實際尺寸及材質仍以客戶訂購時所提供之圖說為準。

SK Valves reserves the right to modify the materials or/and dimensions of the products as provided hereunder from time to time if necessary, or in accordance with the request of clients. The actual dimensions or/and material used are subject to the customer's request after placing the order.

Stainless steel non-rising stem resilient seated gate valves

不銹鋼非昇桿型彈性座封閘閥

Stainless steel resilient seated gate valves is a kind of rubber seated gate valve with fixed nuts and disc. This type of valve has the advantages of light operating, not easy to get clogged and corrosive with exceptional resilience and life service.

不銹鋼彈性座封閘閥是一種橡膠閘座閘閥，以螺帽固定閘瓣，此閘操作輕便，無堵塞無鏽蝕，且具有良好的回復彈性和使用壽命。

FEATURES 設計特點

- 1 Advanced design, light operating, easy to maintain.

操作省力和維護容易的先進設計。

- 2 Flat body design which can avoid clogging. Disc covered by the high-grade rubber satisfies the water drinking standard.

平滑閘體設計避免堵塞的狀況產生。閘瓣被覆高級橡膠，符合飲用水規範。

- 3 Manufacturing standard can be complaint with ISO 7259-1988.

符合生產標準：ISO 7259~1988。

- 4 F/F (Face to Face) meets the standards as follows:

端距符合下述標準：

GB 12221~1989; ISO 5752~1982, Table 1, Series 3; BS 5163~1986.

- 5 Flange design meets the standards as follows:

法蘭設計符合下述標準：

GB/ T17241.6-1998; ISO 7005.2-1998; EN 1092.2-1997; ANSI B16.1



APPLICATION 適用範圍

- Suitable for water supply, wastewater emission, sewage treatment process, cooling/ hot water circulation system, air conditioning, fire extinguishing and irrigation system.

清水供應、廢水排放、污水處理、冷熱水交換系統、空調系統、消防系統及灌溉系統。

TECHNICAL DATA 規格說明

- Size range 尺寸範圍：
DN50 ~ DN1200 mm

Pressure rating 壓力等級：
7.5, 10, 16, 20, 25 Kg/cm²

Working Temp 流體溫度：
-10° ~ 80°C

Flange standard 法蘭標準：

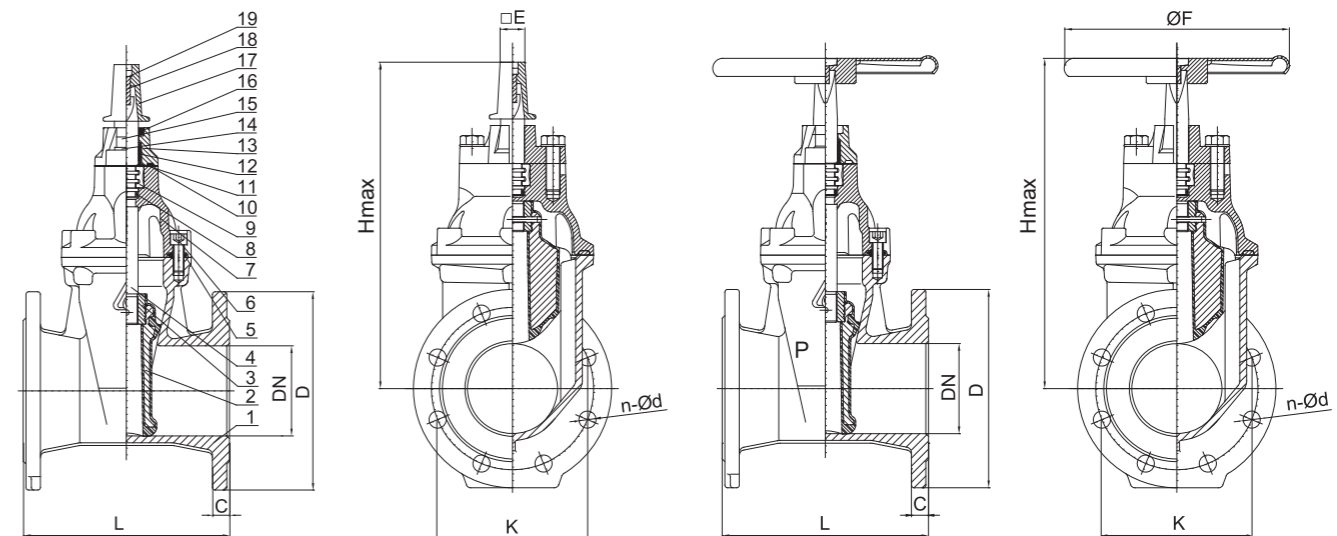
PN10 / PN16 / PN20 / JIS 7.5K、10K / ANSI 150-LB

Stainless steel non-rising stem resilient seated gate valves

不銹鋼非昇桿彈性座封閘閥

PARTS LIST & MATERIAL 構造材質

NO.	Part Names	部 位	Material	材 質
1	Body	閘體	Cast Stainless Steel	SCS13
2	Disc	閘瓣	Cast Stainless Steel+Rubber	SCS13披覆橡膠
3	Disc Nut	閘瓣螺帽	Bronze	青銅
4	Stem	閘桿	Stainless Steel	不銹鋼
5	Gasket	墊片	Rubber	橡膠
6	Bolts	螺栓	Stainless Steel	不銹鋼
7	Bonnet	閘蓋	Cast Stainless Steel	SCS13
8	O-ring	O型環	Rubber	橡膠
9	Thrust Bearing	自潤軸承	Cast Stainless Steel /Bronze	SCS13/青銅
10	O-ring	O型環	Rubber	橡膠
11	O-ring	O型環	Rubber	橡膠
12	Bushing	襯套	Nylon	尼龍
13	Gland	填料函	Cast Stainless Steel	SCS13
14	Washer	華司	Stainless Steel	不銹鋼
15	Bolts	螺栓	Stainless Steel	不銹鋼
16	Wiper Ring	防塵墊圈	Rubber	橡膠
17	Cap / Handwheel	傳動帽/手輪	Cast Stainless Steel / Ductile Cast Iron	SCS13/球墨鑄鐵
18	Bolt	螺栓	Stainless Steel	不銹鋼
19	Washer	華司	Stainless Steel	不銹鋼



DIMENSION 尺寸表

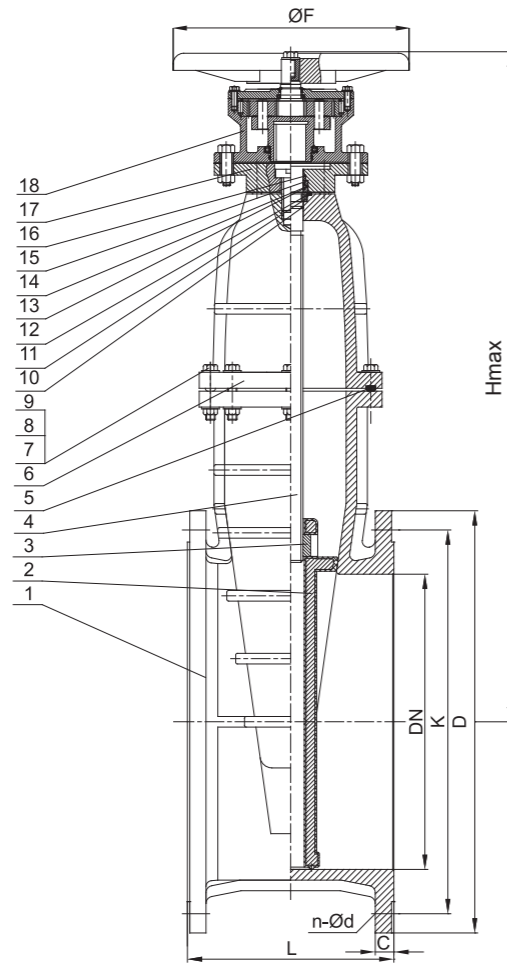
DN	Model/No.	L	H	D		K		n-Ød		C		□E	ØF
				7.5K	10K	7.5K	10K	7.5K	10K	7.5K	10K		
50	RVH(C)X-0050	178	380	155	155	120	120	4-Ø19	4-Ø19	20	16	38	200
75	RVH(C)X-0075	203	460	211	185	168	150	4-Ø19	8-Ø19	21	18	38	250
100	RVH(C)X-0100	229	540	238	210	195	175	4-Ø19	8-Ø19	21	18	38	250
150	RVH(C)X-0150	267	670	290	280	247	240	6-Ø19	8-Ø23	22	22	38	315
200	RVH(C)X-0200	292	780	342	330	299	290	8-Ø19	12-Ø23	23	22	38	315
250	RVH(C)X-0250	330	890	410	400	360	355	8-Ø23	12-Ø25	24	24	38	400
300	RVH(C)X-0300	356	990	464	445	414	400	10-Ø23	16-Ø25	25	24	38	400
350	RVH(C)X-0350	381	1100	530	490	472	445	10-Ø25	16-Ø25	26	26	38	500

Stainless steel non-rising stem resilient seated gate valves

不銹鋼非昇桿型彈性座封閘閥

PARTS LIST & MATERIAL 構造材質

NO.	Part Names	部 位	Material	材 質
1	Body	閥體	Cast Stainless Steel	SCS13
2	Disc	閥瓣	Cast Stainless Steel+Rubber	SCS13披覆橡膠
3	Stem Nut	軸桿螺帽	Bronze	青銅
4	Stem	閥桿	Stainless Steel	不銹鋼
5	Gasket	墊片	Rubber	橡膠
6	Bonnet	閥蓋	Cast Stainless Steel	SCS13
7	Bonnet Bolt	閥蓋螺栓	Stainless Steel	不銹鋼
8	Washer	華司	Stainless Steel	不銹鋼
9	Nut	螺帽	Stainless Steel	不銹鋼
10	O-ring	O 型環	Rubber	橡膠
11	Locating Ring	固定環	Bronze	青銅
12	Minipad	小墊片	TFL	鐵氟龍
13	O-ring	O 型環	Rubber	橡膠
14	O-ring	O 型環	Rubber	橡膠
15	Seal Ring	密封環	Bronze	青銅
16	Dust Ring	防塵套	Rubber	橡膠
17	Gland	填料蓋	Cast Stainless Steel	SCS13
18	Wheel Gear Box	減速機&手輪		



DIMENSION 尺寸表

DN	Model/No.	L	H	D		K		n-Ød		C		ØF
				7.5K	10K	7.5K	10K	7.5K	10K	7.5K	10K	
400	RVH(C)X-0400	406	1180	582	560	524	510	12-Ø25	16-Ø27	27	28	500
500	RVH(C)X-0500	457	1550	706	675	639	620	12-Ø27	20-Ø27	29	30	630
600	RVH(C)X-0600	508	1700	810	795	743	730	16-Ø27	24-Ø33	30	32	630
700	RVH(C)X-0700	610	2120	928	905	854	840	16-Ø33	24-Ø33	31	34	630
800	RVH(C)X-0800	660	2220	1034	1020	960	950	20-Ø33	28-Ø33	32	36	630

Unit : mm

Stainless steel rising stem resilient seated gate valves

不銹鋼昇桿型彈性座封閘閥

Stainless steel resilient seated gate valves is a kind of rubber seated gate valve with fixed nuts and disc. This type of valve has the advantages of light operating, not easy to get clogged and corrosive with exceptional resilience and life service.

不銹鋼彈性座封閘閥是一種橡膠閥座閘閥，以螺帽固定閥瓣，此閥操作輕便，無堵塞無鏽蝕，且具有良好的回復彈性和使用壽命。

FEATURES 設計特點

1 Advanced design, light operating, easy to maintain.

操作省力和維護容易的先進設計。

2 Flat body design which can avoid clogging. Disc covered by the high-grade rubber satisfies the water drinking standard.

平滑閥體設計避免堵塞的狀況產生。閥瓣被覆高級橡膠，符合飲用水規範。

3 Manufacturing standard can be complaint with ISO 7259-1988.

符合生產標準：ISO 7259~1988。

4 F/F (Face to Face) meets the standards as follows:

端距符合下述標準：

GB 12221~1989; ISO 5752~1982, Table 1, Series 3; BS 5163~1986.

5 Flange design meets the standards as follows:

法蘭設計符合下述標準：

GB/ T17241.6-1998; ISO 7005.2-1998; EN 1092.2-1997; ANSI B16.1



APPLICATION 適用範圍

Suitable for water supply, wastewater emission, sewage treatment process, cooling/ hot water circulation system, air conditioning, fire extinguishing and irrigation system.

清水供應、廢水排放、污水處理、冷熱水交換系統、空調系統、消防系統及灌溉系統。

TECHNICAL DATA 規格說明

Size range 尺寸範圍：
DN50 ~ DN1200 mm

Pressure rating 壓力等級：
7.5, 10, 16, 20, 25 Kg/cm²

Working Temp 流體溫度：
-10° ~ 80°C

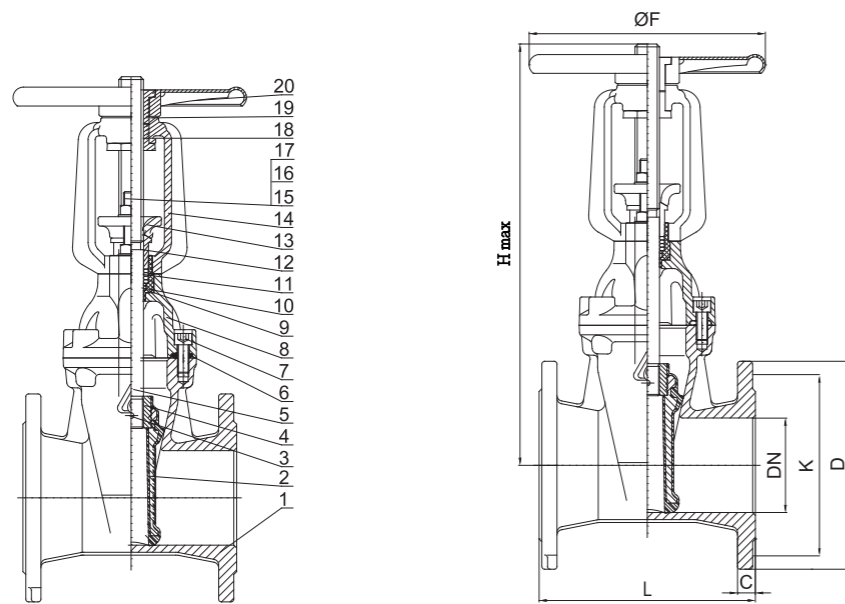
Flange standard 法蘭標準：
PN10 / PN16 / PN20 / JIS 7.5K、10K / ANSI 150-LB

Stainless steel rising stem resilient seated gate valves

不銹鋼昇桿型彈性座封閘閥

PARTS LIST & MATERIAL 構造材質

NO.	Part Names	部位	Material	材質
1	Body	閥體	Cast Stainless Steel	SCS13
2	Disc	閥瓣	Cast Stainless Steel+Rubber	SCS13披覆橡膠
3	Pin	固定銷	Stainless Steel	不銹鋼
4	Disc Nut	閥瓣螺帽	Bronze	青銅
5	Stem	閥桿	Stainless Steel	不銹鋼
6	Gasket	墊片	Rubber	橡膠
7	Bolt	螺栓	Stainless Steel	不銹鋼
8	Bonnet	閥蓋	Cast Stainless Steel	SCS13
9	O-ring	O型環	Rubber	橡膠
10	O-ring	O型環	Rubber	橡膠
11	O-ring	O型環	Rubber	橡膠
12	Press Bushing	閥桿套環	Carbon Steel Zincification	鍍鋅破鋼
13	Gland	填料函	Cast Stainless Steel	SCS13
14	Yoke	聯結軛	Cast Stainless Steel	SCS13
15	Bolt	螺栓	Stainless Steel	不銹鋼
16	Nuts	螺帽	Stainless Steel	不銹鋼
17	Washer	華司	Stainless Steel	不銹鋼
18	Stem Nut Couple	閥桿螺帽組合	Bronze	青銅
19	Washer	華司	Brass	黃銅
20	Handwheel	手輪	Cast Stainless Steel / Ductile Cast Iron	SCS13/球墨鑄鐵



DIMENSION 尺寸表

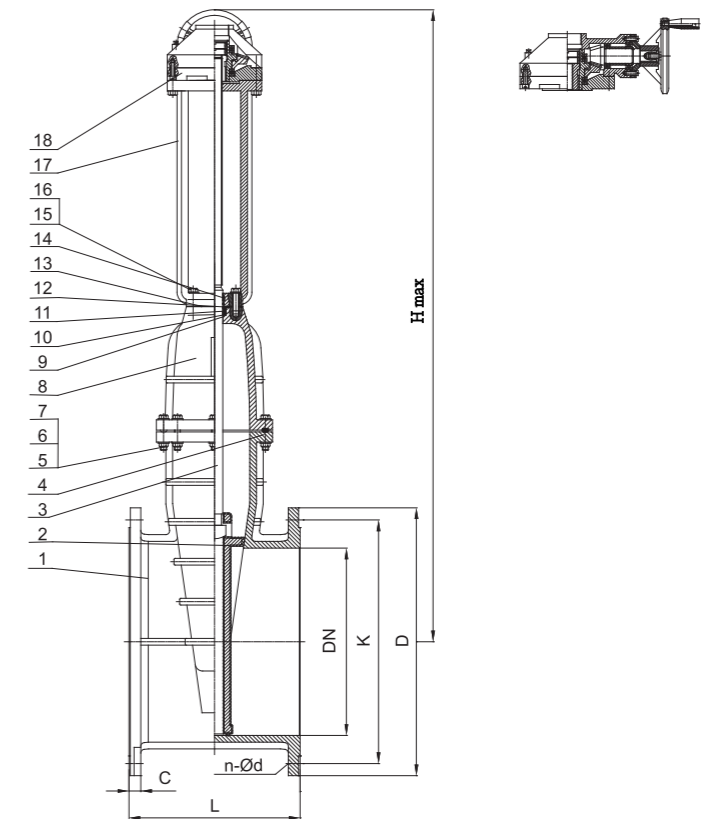
DN	Model/No.	L	H _{max}	D		K		n-Ød		C		ØF
				7.5K	10K	7.5K	10K	7.5K	10K	7.5K	10K	
50	RRHX-0050	178	310	155	155	120	120	4-Ø19	4-Ø19	20	16	200
75	RRHX-0075	203	420	211	185	168	150	4-Ø19	8-Ø19	21	18	250
100	RRHX-0100	229	470	238	210	195	175	4-Ø19	8-Ø19	21	18	250
150	RRHX0150	267	530	290	280	247	240	6-Ø19	8-Ø23	22	22	315
200	RRHX-0200	292	760	342	330	299	290	8-Ø19	12-Ø23	23	22	315
250	RRHX-0250	330	890	410	400	360	355	8-Ø23	12-Ø25	24	24	400
300	RRHX-0300	356	1040	464	445	414	400	10-Ø23	16-Ø25	25	24	400
350	RRHX-0350	381	1170	530	490	472	445	10-Ø25	16-Ø25	26	26	500
400	RRHX-0400	406	1300	582	560	524	510	12-Ø25	16-Ø27	27	28	500

Stainless steel rising stem resilient seated gate valves

不銹鋼昇桿型彈性座封閘閥

PARTS LIST & MATERIAL 構造材質

NO.	Part Names	部位	Material	材質
1	Body	閥體	Cast Stainless Steel	SCS13
2	Disc	閥瓣	Cast Stainless Steel+Rubber	SCS13披覆橡膠
3	Stem	閥桿	Stainless Steel	不銹鋼
4	Gasket	墊片	Rubber	橡膠
5	Bonnet Bolt	閥蓋墊片	Stainless Steel	不銹鋼
6	Washer	華司	Stainless Steel	不銹鋼
7	Nut	螺帽	Stainless Steel	不銹鋼
8	Bonnet	閥蓋	Cast Stainless Steel	SCS13
9	Gasket	墊片	TFL	鐵氟龍
10	O-ring	O型環	Rubber	橡膠
11	O-ring	O型環	Rubber	橡膠
12	Locating Ring	固定環	Brass	黃銅
13	Gasket	墊片	TFL	鐵氟龍
14	Dust Ring	防塵套	Rubber	橡膠
15	Bolt	螺栓	Stainless Steel	不銹鋼
16	Washer	華司	Stainless Steel	不銹鋼
17	Yoke	聯結軛	Cast Stainless Steel	SCS13
18	Wheel Gear Box	減速機 & 手輪		



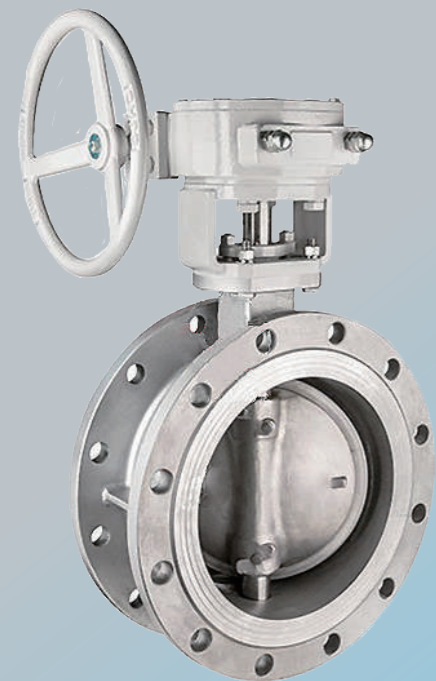
DIMENSION 尺寸表

DN	Model/No.	L	H _{max}	D		K		n Ød		C		Unit : mm
				7.5K	10K	7.5K	10K	7.5K	10K	7.5K	10K	
500	RRGX-0500	457	1710	706	675	639	620	12-Ø27	20-Ø27	29	30	
600	RRGX-0600	508	1980	810	795	743	730	16-Ø27	24-Ø33	30	32	
700	RRGX-0700	610	2400	928	905	854	840	16-Ø33	24-Ø33	31	34	
800	RRGX-0800	660	2590	1034	1020	960	950	20-Ø33	28-Ø33	32	36	

Flange type butterfly valve 中軸法蘭型蝶閥

The joint configuration (flange-type, lug-type, and wafer-type joint) and requested international standards can be changed upon customer order.

本公司生產之蝶型閥依管線系統接頭的配置型式可分為法蘭型、多耳型、及夾持型，且可符合API609、AWWA C504、AWWA C516、ISO5752、BS 5155、JIS B2032、JWWA B138等國際規範。



Flange type butterfly valve

- The valve body has long-type and short-type, which differ in end-to-end distance between two flanges.
- Based on the shaft orientation, the butterfly valve can break into two categories: vertical-type and horizontal-type.
- In flange-type butterfly valves, we provide the option of centric、single, double, and tri-eccentric designs.
- Driving mode: manual gear, pneumatic actuator, and motor actuator
- Application: water pipeline, sewage, chemical fluid, gas
- For seawater usage, a rubber-lined body can serve to prevent corrosion.

Size range: 2"~104" (50mm~2600mm)
Pressure class: 125LB/150LB/250LB/300LB
PN10/PN16
7.5K/10K/16K

法蘭型蝶閥

- 依法蘭端距可為長體型或短體型。
- 依閥軸方向可分為立式或臥式。
- 結構設計可為中軸型、單偏心、雙偏心、三偏心。
- 驅動方式: 手動型、氣動型、電動操作型。
- 應用範圍: 自來水、污水、海水、化學流體、氣體...等。
- 為了配合不同系統之需求，閥體、閥瓣、閥軸、閥座...等零件材質可依客戶要求生產。
- 用於海水管線之閥體或閥瓣可採內襯橡膠設計以防止腐蝕

尺寸範圍: 2"~104" (50mm~2600mm)
壓力等級: 125LB/150LB/250LB/300LB
PN10/PN16
7.5K/10K/16K

Lug type butterfly valve 多耳型蝶閥

Lug type butterfly valve

- The compact design allows this type of butterfly valve to install in a tight space.
- Can be used on dead-end service with a downstream flange attached
- In lug-type butterfly valves, we provide the option of centric double and tri-eccentric designs.
- Driving mode: manual gear, pneumatic actuator, and motor actuator
- Application: water pipeline, sewage, chemical fluid, gas
- Material of the parts can be changed upon customer request

Size range: 2"~48" (50mm~1200mm)
Pressure class: 125LB/150LB/250LB/300LB
PN10/PN16
10K/16K



多耳型蝶閥

- 有極短之端距優勢，安裝空間小。
- 可與法蘭接頭作配合，亦適合作為管末端用閥。
- 結構設計可為中軸型、雙偏心、三偏心。
- 驅動方式: 手動型、氣動型、電動操作型
- 應用範圍: 自來水、污水、海水、化學流體、氣體...等
- 為了配合不同系統之需求，閥體、閥瓣、閥軸、閥座...等零件材質可依客戶要求生產

尺寸範圍: 2"~48" (50mm~1200mm)
壓力等級: 125LB/150LB/250LB/300LB
PN10/PN16
10K/16K



Wafer type butterfly valve

- Wafer joint configuration allows users to install the valve in tight space and without additional screws
- The valve's seat structure is designed to be removable, which can be easily removed for maintenance/ replacement.
- In wafer-type butterfly valves, we provide the option of centric double and tri-eccentric designs.
- Driving mode: manual gear, pneumatic actuator, and motor actuator
- Application: water pipeline, sewage, chemical fluid, gas
- Material of the parts can be changed upon customer request

Size range: 2"~48" (50mm~1200mm)
 Pressure class: 125LB/150LB/250LB/300LB
 PN10/PN16
 10K/16K

夾持型蝶閥

- 薄式夾持型設計，安裝空間小。
- 閥座採可拆卸式構造利於方便維修與更換。
- 結構設計可為中軸式、雙偏心、三偏心。
- 驅動方式：手動型、氣動型、電動操作型。
- 應用範圍：自來水、污水、海水、化學流體、氣體...等。
- 為了配合不同系統之需求，閥體、閥瓣、閥軸、閥座..等零件材質可依客戶要求生產。

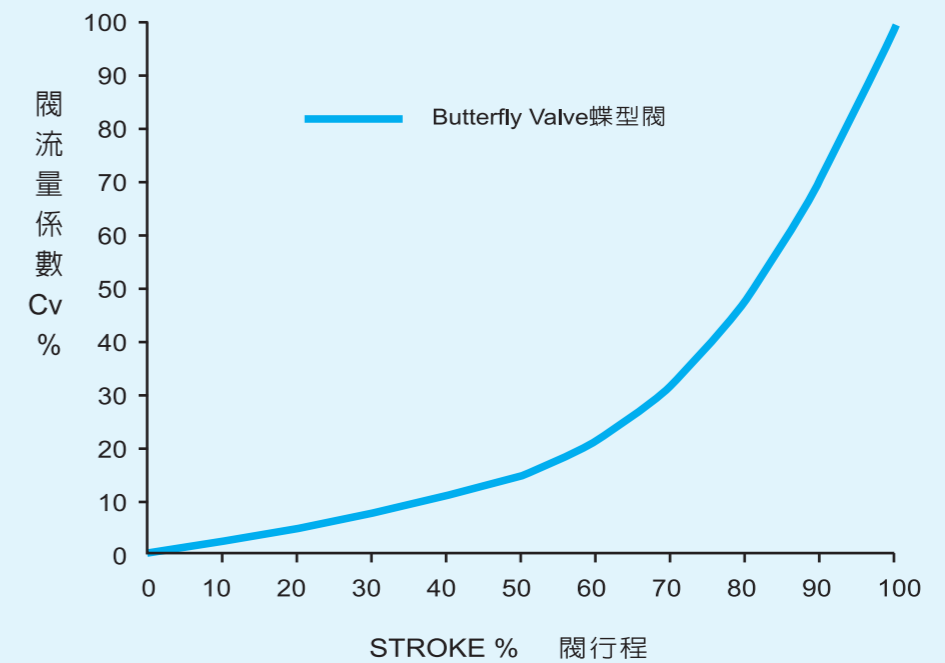
尺寸範圍: 2"~48" (50mm~1200mm)
 壓力等級: 125LB/150LB/250LB/300LB
 PN10/PN16
 10K/16K

TYPE OF THE BUTTERFLY VALVE 蝶閥型式

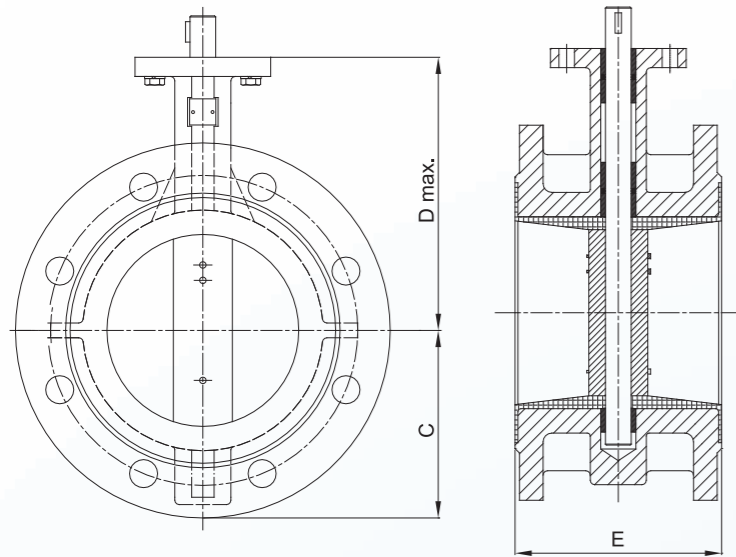
JOINT TYPE 接頭型式	WAFER 夾持型	LUG 多耳型	FLANGE 法蘭型
DESIGN MODLE 設計型式			
CENTRIC 中軸式			
SINGLE ECCENTRIC 單偏心			
DUAL ECCENTRIC 雙偏心			
TRI-ECCENTRIC 三偏心			

Annotations: COST BIAS 成本趨勢 (blue arrow pointing right), PERFORMANCE BIAS 性能趨勢 (blue arrow pointing down), PRICE BIAS 價格趨勢 (red arrow pointing down-right).

STROKE & Cv CURVE 閥行程與流量係數曲線圖



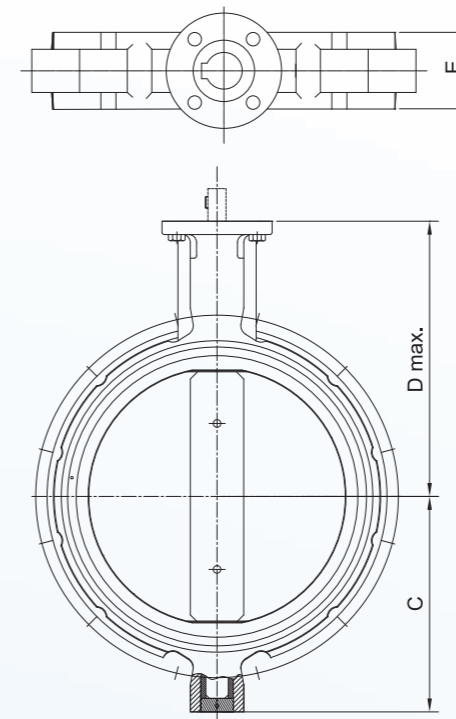
Centric flange type butterfly valves
中軸法蘭型蝶閥



DIMENSIONS 尺寸表 mm

DIM SIZE	C	E	D max.
50	66	43	168
65	79	46	178
80	91	46	186
100	110	52	203
125	124	56	216
150	140	56	237
200	176	60	289
250	210	68	321
300	240	78	373
350	274	78	390
400	315	102	400
450	345	114	430
500	390	127	498
600	465	154	575
700	520	165	614

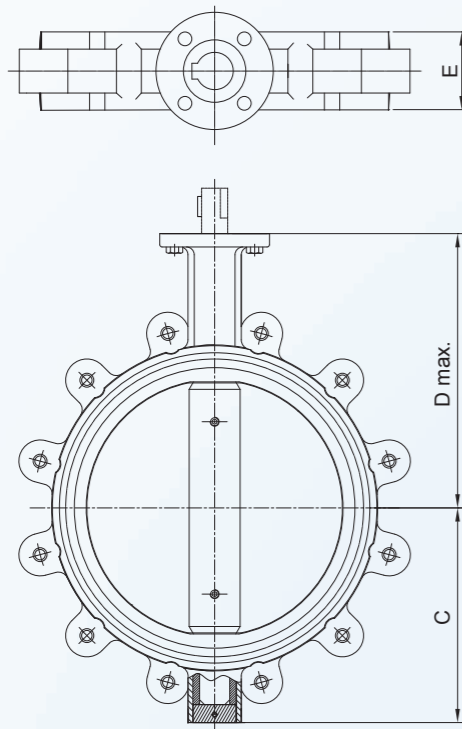
Centric wafer type butterfly valve
中軸對夾持型蝶閥



DIMENSIONS 尺寸表 mm

DIM SIZE	C	E	D max.
50	66	43	168
65	79	46	178
80	91	46	186
100	110	52	203
125	124	56	216
150	140	56	237
200	176	60	289
250	210	68	321
300	240	78	373
350	274	78	390
400	315	102	400
450	345	114	430
500	390	127	498
600	465	154	575
700	520	165	614

Centric lug type butterfly valve
中軸多耳型蝶閥



DIMENSIONS 尺寸表 mm

DIM SIZE	C	E	D max.
50	66	43	168
65	79	46	178
80	91	46	186
100	110	52	203
125	124	56	216
150	140	56	237
200	176	60	289
250	210	68	321
300	240	78	373
350	274	78	390
400	315	102	400
450	345	114	430
500	390	127	498
600	465	154	575
700	520	165	614

CENTRIC PARTS & MATERIAL / 中軸式零件材質

1. Body 閥體: SCS 鑄不銹鋼
2. Seat 閥座: Rubber/ EPDM
Neoprene 合成橡膠
Teflon 鐵弗龍
3. Disc 閥盤: SCS 鑄不銹鋼
4. Shaft 閥軸: Stainless Steel 不銹鋼
5. Pin 固定銷: Stainless Steel 不銹鋼
6. Bush 軸套: Teflon 鐵弗龍
Bronze 銅合金

CENTRIC MAX. OPERATING TORQUE
中軸式最大操作扭力參考值

Ref. Kgf-m

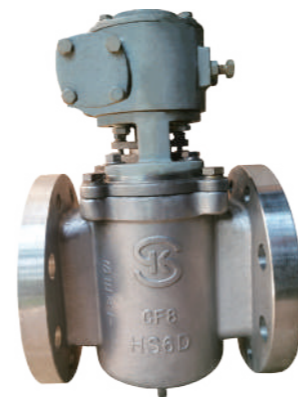
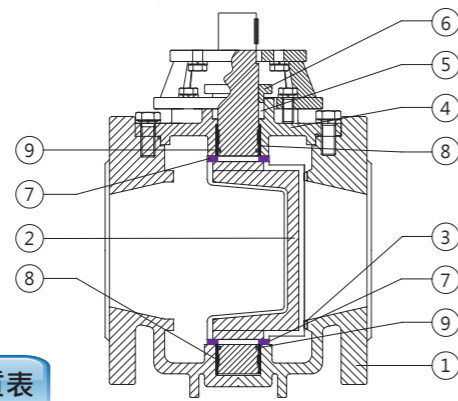
CLASS SIZE	PN 6	PN 10
50	2.3	2.5
65	3.1	3.4
80	4.1	4.5
100	6.8	7.5
150	16.1	17.8
200	28.7	33.7
250	47.6	56
300	69.4	81.6
350	84.1	98.9
400	113.4	133.4
450	146	182.4
500	186.8	233.5
600	303	378.7
700	521	651
800	686	857.2

Eccentric plug valves 偏心柱塞閥

- Plug valves are covered with EPDM, which enhance the sealing ability and prevent leakage when the valve is closed.
閥栓採用高級橡膠包覆，在閥栓關閉時，能有效關斷，避免滲漏。
- When the plug valve opens, the plug immediately shifts away from the valve seat. Once the plug's edge is aligned with the upper edge body, it is considered the open position of the valve.
當柱塞開啓時，柱塞與閥座立即偏移，待柱塞至貼近管線上緣時，即為閥開啓位置。
- When used in elevated drainage systems, plug valves primarily serve as the shut-off valve and do not have flow control capabilities; therefore, they should be installed at the pipeline outlet to ensure the valve can function adequately.
用於高架排水系統時，因其柱塞閥主要功能在於全關 / 全開等狀態，並無調流功能，所以裝設柱塞閥應將柱塞面對出水口的位置安裝，確保閥能發揮正常開 / 關等功能。
- Applicable for sewage plant's pipeline and relative facility.
應將柱塞面對出水口的位置安裝，確保閥能發揮正常開 / 關等功能。

FEATURES 設計特點

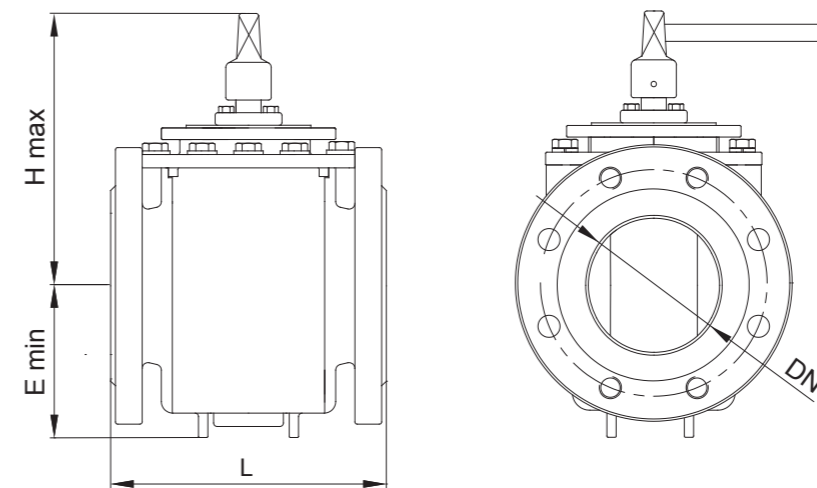
- The internal design of the valve body creates turbulence to prevent sedimentation of silt and sand inside the valve. The flow area can reach more than 80%, reducing the accumulation of impurities buildup over time.
閥體內部特殊設計，使閥體內部產生擾流，避免泥沙沉積，其水流面積可達80%以上，減少雜質淤積於閥體內。
- The eccentric design is deployed to the shaft and the seat to make the operation more efficient and reduce wear between parts.
閥座與閥軸採偏心式設計，使操作更為省力，並有效降低閥座磨損。
- Adjustable valve stem packing design allows users to adjust on-site without disassembling the attached driving module.
可調整式閥軸填料設計，可在現場隨時調整，不必拆卸操作機。
- Handle type, worm gear type, or motorized are available upon customer request.
可依實際需要選擇把手式、渦齒式、或電動機操作方式。



PARTS & MATERIAL 零件材質表

NO.	PARTS 零件	MATERIAL 材質
1.	Body 閥體	SCS 鑄不銹鋼
2.	Plug 柱塞	DUCTILE CAST IRON 球墨鑄鐵 / SCS 鑄不銹鋼 / COVERED WITH EPDM 被覆合成橡膠
3.	Seat 閥座	STAINLESS STEEL 不銹鋼
4.	Cover 閥蓋	SCS 鑄不銹鋼
5.	Packing 纖維填料	VIRGIN PTFE 鐵弗龍纖維
6.	Gland 填料壓蓋	SCS 鑄不銹鋼
7.	Washer 墊片	STAINLESS STEEL 不銹鋼
8.	Bushing 軸襯	STAINLESS STEEL 不銹鋼
9.	O-ring 軸封	NBR / EPDM / VITON 合成橡膠

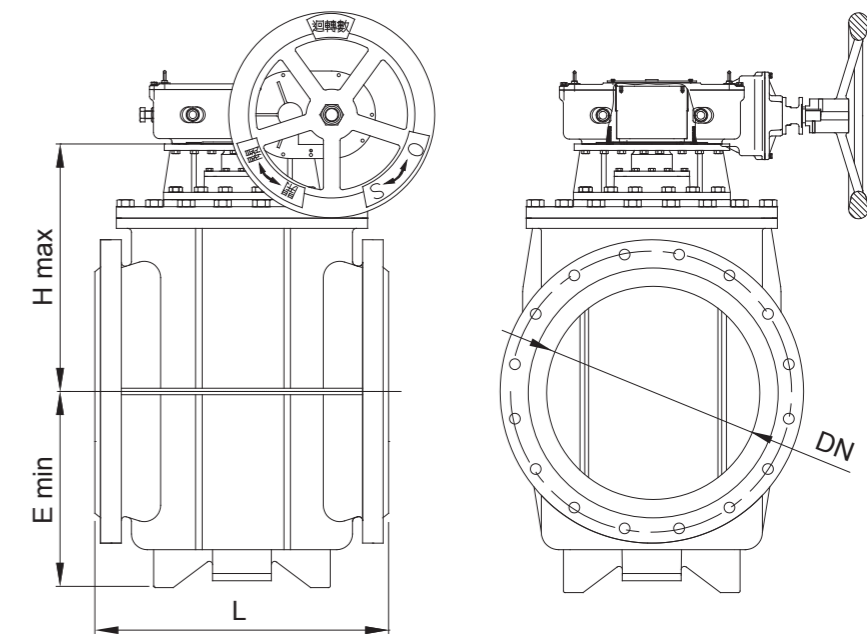
LEVER TYPE PLUG VALVE 把手型柱塞閥 Φ50~Φ200mm



DIMENSION 尺寸表 unit: mm

DIM SIZE	L	E (min)	H (max)
50	178	50	150
80	203	100	200
100	229	120	300
125	229	120	350
150	267	150	400
200	292	150	450

WORM GEAR TYPE PLUG VALVE 減速機型柱塞閥 Φ80~Φ1200mm



DIMENSION 尺寸表

SIZE DIM	80	100	125	150	200	250	300	350	400	450	500	600	700	800	900
L	203	229	229	267	292	330	356	406	406	620	620	700	800	900	1321
E (min)	100	120	120	140	150	180	200	400	400	450	530	300	600	600	700
H (max)	400	500	550	600	650	750	800	1300	1300	1450	1500	1550	1600	1600	1700

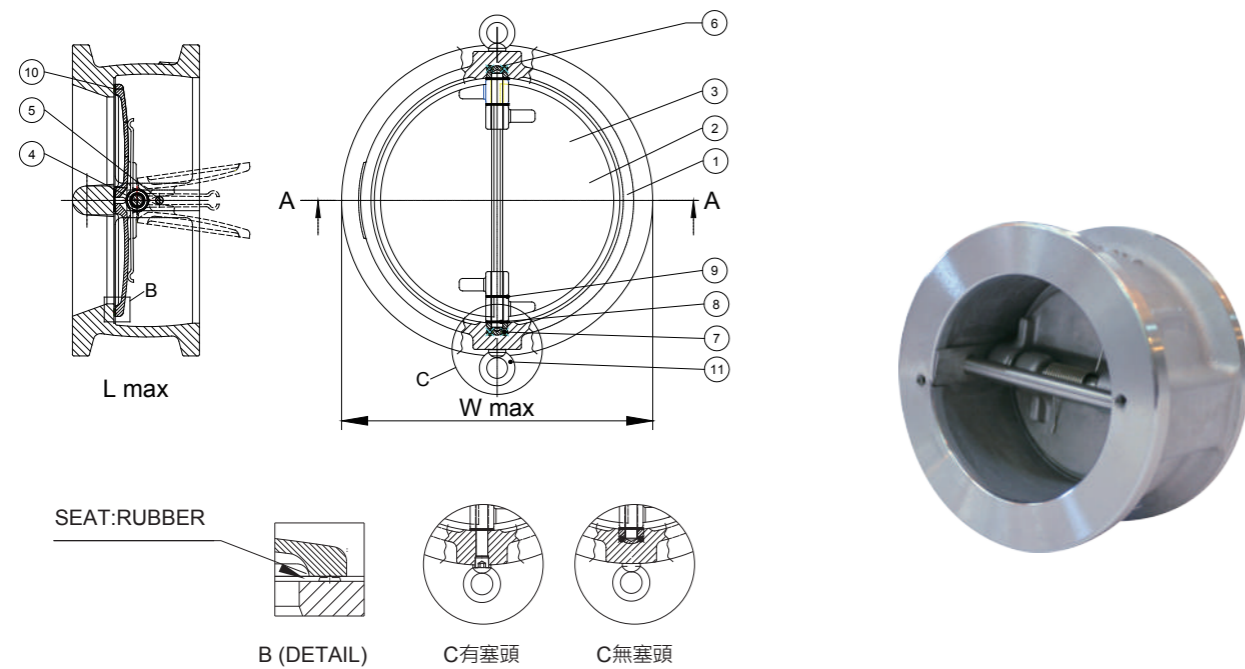
NOTE: 1. Ø1000 ~ Ø1200 CAN BE MADE AS CUSTOMER'S REQUIREMENT.

2. WORM GEAR MODEL IS ACCORDING TO THE ACTUAL REQUIREMENT.

註: 1.可依客戶需求製作。

2.減速機型式可依實際需要配置。

Dual plate check valve with rubber seat 雙瓣彈簧式逆止閥



DIMENSION 尺寸表

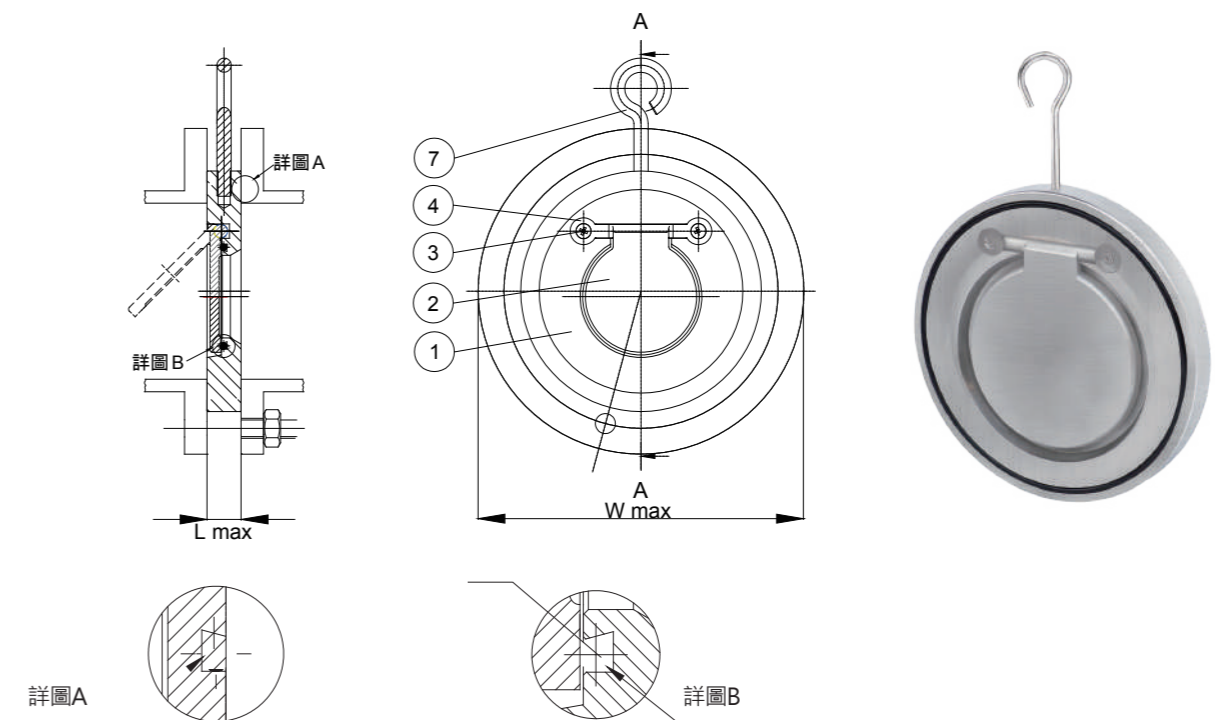
unit : mm

DN DIM	50	65	80	100	125	150	200	250	300	350	400	450	500	550	600	650	700	750	800	900
W max	130	155	165	210	255	285	340	415	480	510	580	630	700	750	810	890	930	990	1035	1150
L max	75	85	90	95	120	155	180	230	250	290	330	380	385	385	455	480	500	520	550	655

PARTS & MATERIAL 零件材質表

NO.	PARTS 零件	MATERIAL 材質
1.	Body 閥體	SCS13 鑄不銹鋼
2.	Plate 閥瓣	SCS13 鑄不銹鋼
3.	Spring 彈簧	STAINLESS STEEL 不銹鋼 / ALLOY STEEL 合金鋼
4.	Hinge Pin 閥桿	STAINLESS STEEL 不銹鋼
5.	Stop Pin 阻桿	STAINLESS STEEL 不銹鋼
6.	Carrier 傳動軸	CAST STEEL 鑄鋼 / STAINLESS STEEL 不銹鋼
7.	Retainer Screw 固定器螺絲	STAINLESS STEEL 不銹鋼
8.	Body Washer 閥體墊圈	TEFLON 鐵弗龍 / STAINLESS STEEL 不銹鋼
9.	Plate Washer 閥瓣墊圈	TEFLON 鐵弗龍 / STAINLESS STEEL 不銹鋼
10.	Seat 座封	NBR / EPDM / VITON 合成橡膠 / STAINLESS STEEL 不銹鋼
11.	Eye Bolt 吊耳	ALLOY STEEL 合金鋼 / STAINLESS STEEL 不銹鋼

Single plate check valve-long type 單瓣薄型逆止閥



DIMENSION 尺寸表

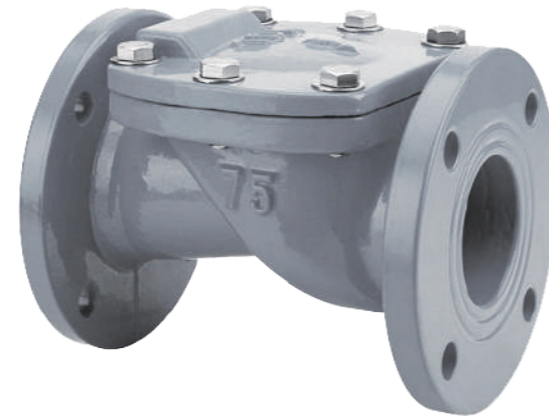
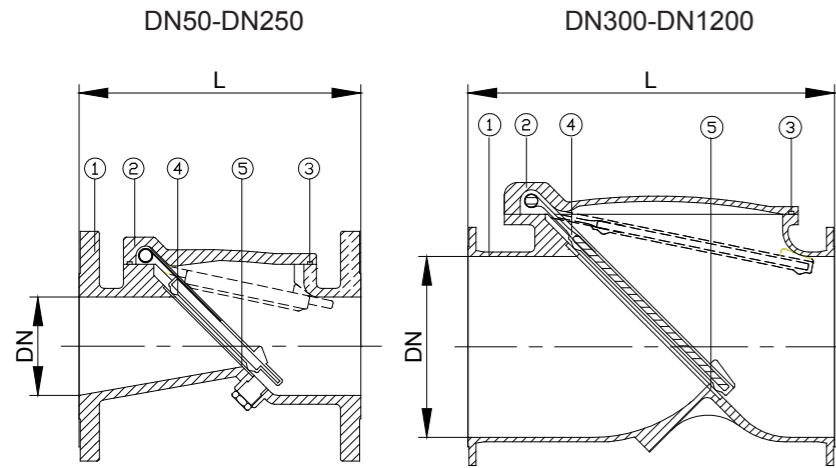
unit : mm

DN DIM	25	40	50	65	80	100	125	150	200	250	300	350	400	450	500	600
W max	90	110	130	145	170	200	235	270	330	400	440	510	560	620	710	800
L max	35	35	35	35	35	35	35	40	50	60	70	70	70	95	100	110

PARTS & MATERIAL 零件材質表

NO.	PARTS 零件	MATERIAL 材質
1.	Body 閥體	SCS鑄不銹鋼
2.	Plate 閥瓣	SCS鑄不銹鋼
3.	Retainer 固定器	STAINLESS STEEL 不銹鋼
4.	Bushing 軸襯	STAINLESS STEEL 不銹鋼
5.	Seat 座封	STAINLESS STEEL 不銹鋼 / NBR / EPDM / VITON 合成橡膠 TEFLON 鐵弗龍
6.	O Ring 套環接頭	ALLOY STEEL 合金鋼
7.	Eye Bolt 吊耳	STAINLESS STEEL 不銹鋼

General type 一般型



DIMENSION 尺寸表

unit : mm

DN	50	75	100	150	200	250	300	350	400	450	500	600	700	800	900	1000	1100	1200
L	203	241	292	356	495	622	698	787	914	1016	1016	1219	1448	1524	1750	1960	2160	2350

PARTS & MATERIAL 零件材質表

NO.	PARTS 零件	MATERIAL 材質
1.	Body 閘體	SCS13 鑄不銹鋼
2.	Cover 閘蓋	SCS13 鑄不銹鋼
3.	Seal 水封	NBR / EPDM 合成橡膠
4.	Plate & Rod 平板及桿	DUCTILE CASTING IRON 球墨鑄鐵 / STEEL 鋼製 / STAINLESS STEEL 不銹鋼
	Flapper 閘瓣包膠	NBR/EPDM/VITON(NYLON FIBER REINFORCED) 合成橡膠(強化尼龍纖維補強)
5.	Seat 閘座	STAINLESS STEEL 不銹鋼

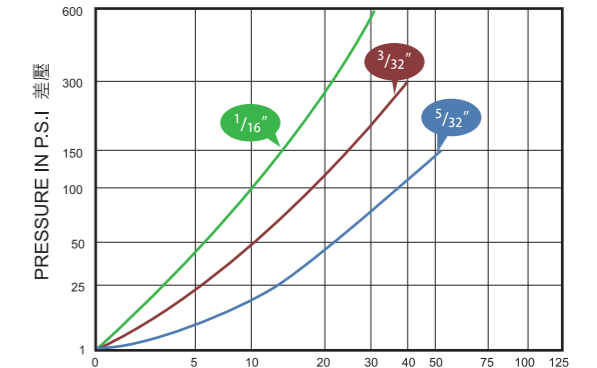
FEATURES 設計特點

- The automatic air valve is designed to be installed at the highest point of the pipeline system, which can release the accumulated air under any working pressure.
設於管線至高點，任何工作壓力下能排出累積空氣。
- Preventing fluid spilled out under pressure less than 0.2kg/cm².
壓力低於0.2kg/cm²也可防止水流溢出。
- Small in size, easy to maintain.
體積小，維護容易。



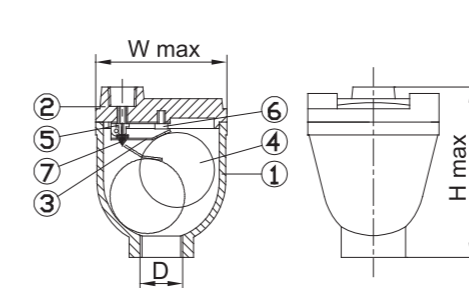
功能曲線圖 CHARACTERISTIC CURVE

NOTE: SHADED AREAS INDICATE NON STANDARD OPTIONS
註:標示口徑的曲線為參考值。



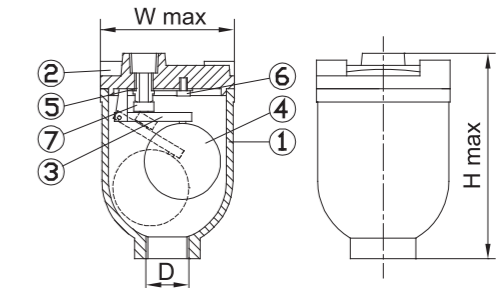
DISCHARGE OF AIR THROUGH AN ORIFICE IN S.C.F.M. (STANDARD CUBIC FEET OF FREE AIR PER MINUTE)
排氣量

Choice suitable orifice by "characteristic curve"
依功能曲線圖選擇需要的排氣孔口



DN25 DIMENSION 尺寸表

DIM. SIZE	D	H	
		max	max
13~25	1/2"~1"	200	340



DN50 DIMENSION 尺寸表

DIM. SIZE	D	H	
		max	max
32~50	1 1/4"~2"	215	360

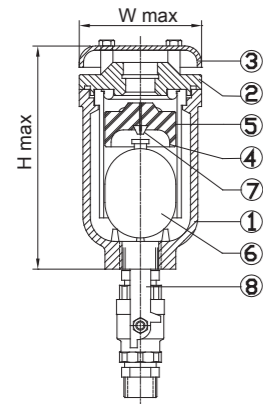
PARTS & MATERIAL 零件材質表

NO.	PARTS 零件	MATERIAL 材質
1.	Body 閘體	SCS 鑄不銹鋼
2.	Cover 上閘蓋	SCS 鑄不銹鋼
3.	Lever 槓桿	STAINLESS STEEL 不銹鋼
4.	Float Ball 浮球	STAINLESS STEEL 不銹鋼
5.	Plug 塞頭	STAINLESS STEEL 不銹鋼 / BRONZE 青銅
6.	Bolt 螺栓	STAINLESS STEEL 不銹鋼
7.	Seat 座封	NBR / EPDM / VITON 合成橡膠

Air valve 排氣閥

FEATURES 設計特點

- Quick air valve is designed to rapidly release air within the pipeline; therefore, it is suitable to install at the pump outlet.
常裝設於泵浦出水口及需要快速排除管內空氣之管線上。
- It's internal body design allows the float ball to perform up-and-down motions quickly in response to the valve's on-off function.
其閥內之特殊結構設計，使浮球能快速下降並迅速開啟閥門。
- During the fluid transporting in a fully contained pipeline, it can release accumulated air through the plug to prevent accruing air pockets from affecting the water flow performance.
滿管送水時，能透過塞頭之小孔排出管中累積之微小空氣，避免管線形成氣囊，影響輸水效率。



DN20-50

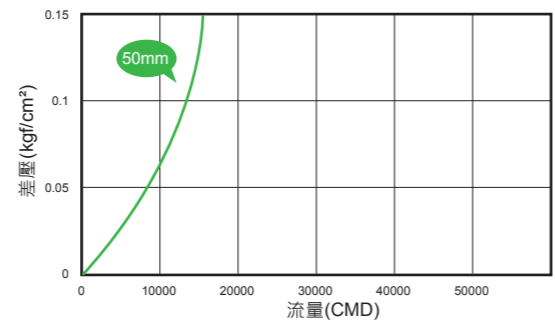
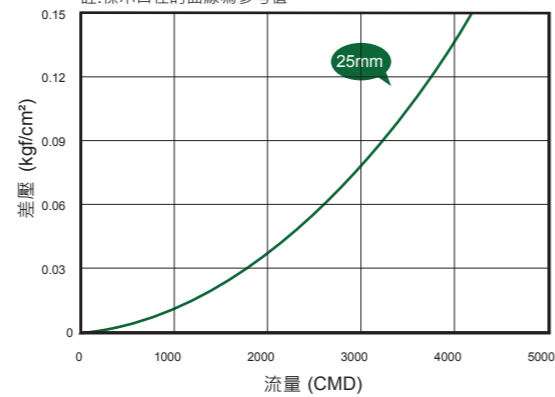
DIMENSION 尺寸表

DIM. SIZE	W max	H max
20	120	250
25	120	250
50	215	390



功能曲線圖 CHARACTERISTIC CURVE

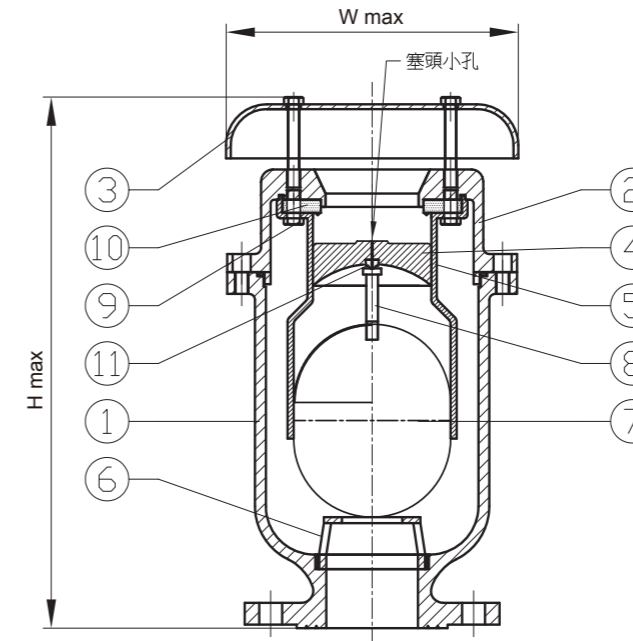
NOTE: SHADED AREAS INDICATE NON STANDARD OPTIONS
註:標示口徑的曲線為參考值。



PARTS & MATERIAL 零件材質表

NO.	PARTS 零件	MATERIAL 材質
1.	Body 閥體	SCS 鑄不銹鋼
2.	Cover 上閥蓋	SCS 鑄不銹鋼
3.	Vent Cap 排氣口蓋	SCS 鑄不銹鋼
4.	Plug 塞頭	ABS 工程塑膠
5.	Plug Holder 塞頭承座	ABS 工程塑膠
6.	Float Ball 浮球	STAINLESS STEEL 不銹鋼
7.	Seat 座封	NBR / EPDM / VITON 合成橡膠
8.	Cock 考克	STAINLESS STEEL 不銹鋼 / BRONZE 青銅

Air valve 排氣閥

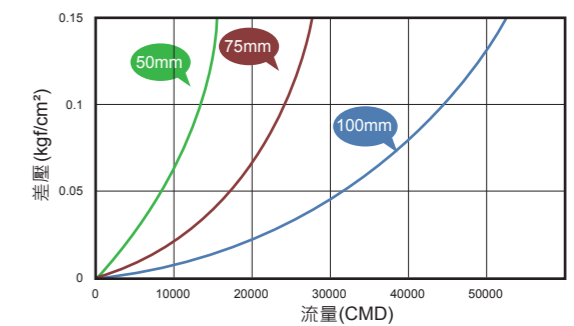


DN50-100

DIMENSION 尺寸表

DIM. SIZE	W max	H max
50	215	390
75	270	480
100	315	610

功能曲線圖 CHARACTERISTIC CURVE



PARTS & MATERIAL 零件材質表

NO.	PARTS 零件	MATERIAL 材質
1.	Body 閥體	SCS 鑄不銹鋼
2.	Cover 上閥蓋	SCS 鑄不銹鋼
3.	Vent Cap 排氣口蓋	SCS 鑄不銹鋼
4.	Plug 塞頭	SYNTHETIC RESIN 合成樹脂
5.	Float Base 浮球座	ABS 工程塑膠
6.	Float socket 浮球承座	STAINLESS STEEL 不銹鋼
7.	Float Ball 浮球	STAINLESS STEEL 不銹鋼
8.	Embolism 栓塞	STAINLESS STEEL 不銹鋼
9.	Fixing bolts 固定螺栓	STAINLESS STEEL 不銹鋼
10.	Large hole seal 大孔座封	BUNA-N 橡膠
11.	Small hole seal 小孔座封	BUNA-N 橡膠